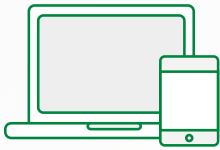


TELADOC



REQUEST. VISIT. RESOLVE.

Speak to a licensed doctor by web, phone or mobile app in minutes. Quality care is available 24/7/365.

Doctors can send you a prescription anywhere in the U.S.A.



No co-pay for employees enrolled in BCN, BlueCard, or Community Blue. Those enrolled in the CDHP pay the full amount until the deductible is met.

Treat a Range of Conditions:

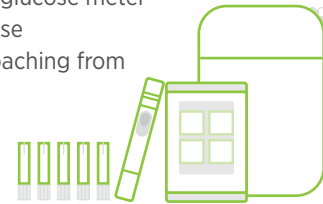
- ✓ **GENERAL MEDICAL**
Cold/flu, bronchitis, allergies, pink eye
- ✓ **DERMATOLOGY**
Acne, skin rash, moles/warts, abrasions
- ✓ **MENTAL HEALTH**
Depression, anxiety, grief counseling, addiction

LIVONGO by Teladoc

A free diabetes management program for benefits-eligible employees, their spouse and dependents. Sign up to receive the Welcome Kit.

FREE WELCOME KIT INCLUDES

- Unlimited test strips and lancets
- Lancing device
- Connected glucose meter
- Carrying case
- Optional coaching from a specialist



SAVE MONEY

Unlimited FREE test strips and lancets whenever you need them.

GET HEALTHIER

Members feel empowered to take control of their health.



TELADOC MEDICAL EXPERTS

Expert medical advice for informed medical decisions. Teladoc Medical Experts is committed to helping employees enrolled in an MSU health plan make the right choice with confidence.



Experts review your medical case.



Get a custom report and medical opinion from top doctors.



Ask questions or get help locating the best doctor near you.



MSU Human Resources BENEFIT HIGHLIGHTS

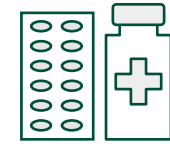
Optional benefits and resources available to MSU employees. Learn how to sign up at hr.msu.edu/benefits.

ON-CAMPUS/LOCAL SERVICES



IMAGING SERVICES

McLaren Greater Lansing and MSU Health Care offer imaging services—MRI, x-ray and more—at the Izzo Family Medical Center or at McLaren Greater Lansing.



PRESCRIPTION DELIVERY

Save time by having MSU Health Care Pharmacy deliver your prescriptions right to your door or office on campus.

VOLUNTARY BENEFITS

Benefits-eligible employees can enroll in these optional benefits through MSU Benefits Plus with special pricing for MSU employees.

Vision, legal and critical illness insurance have an open enrollment period (October), while others you can enroll in at any time. Enrollees pay the premiums for the benefits they select and those payments are collected via payroll deduction.



PET

Nationwide offers several plans that may cover surgeries, tests, prescriptions, exams & more.



HOME/AUTO

MetLife or Liberty Mutual offer home and auto insurance plans.



DISCOUNTS

You have access to special discounts on electronics, home goods, food, entertainment and more!



VISION

VSP plans offer savings for high-quality eye care and eyewear.



LEGAL

ARAG offers protection from today's legal matters and covers 100% of most fees from a network attorney.



CRITICAL ILLNESS

MetLife gives you money for unexpected illnesses. Use for medical expenses or any other use you wish.